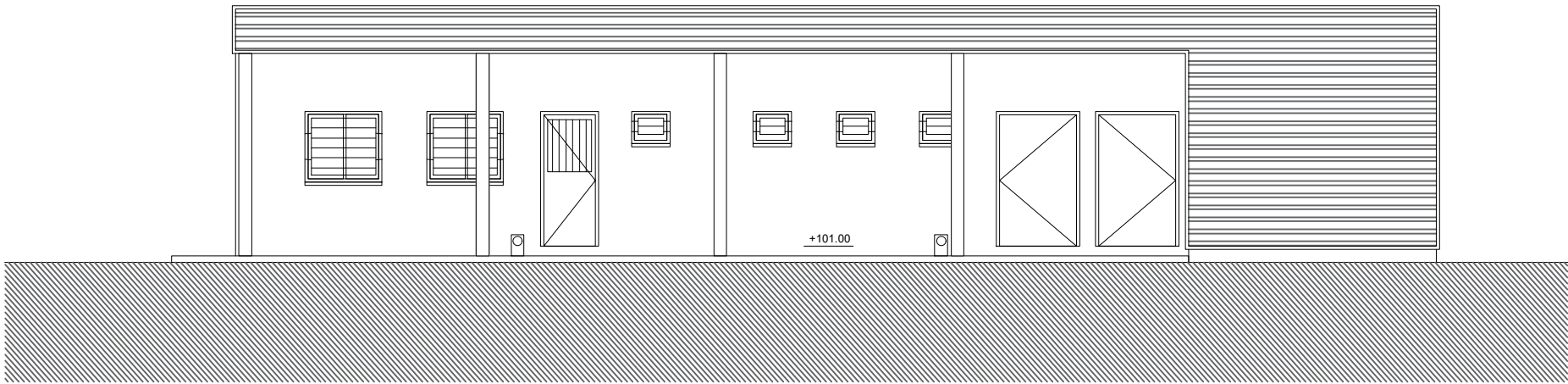
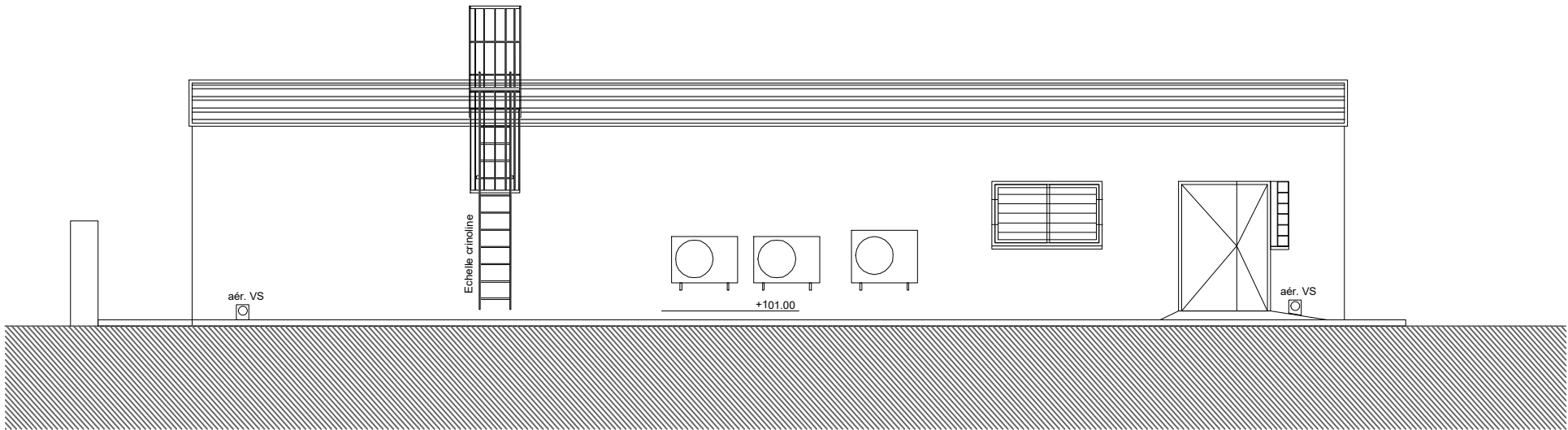




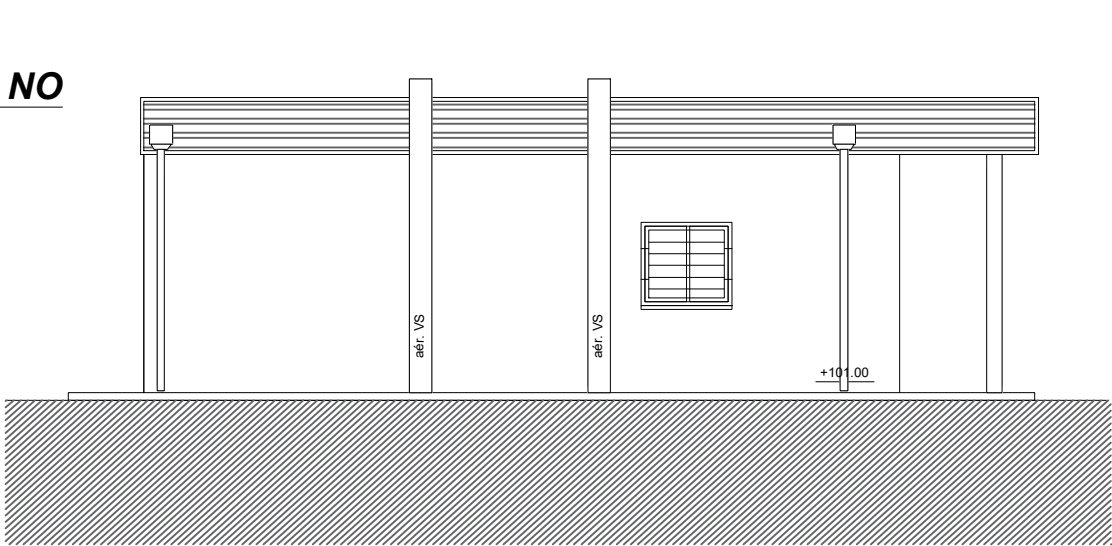
FACADE SO



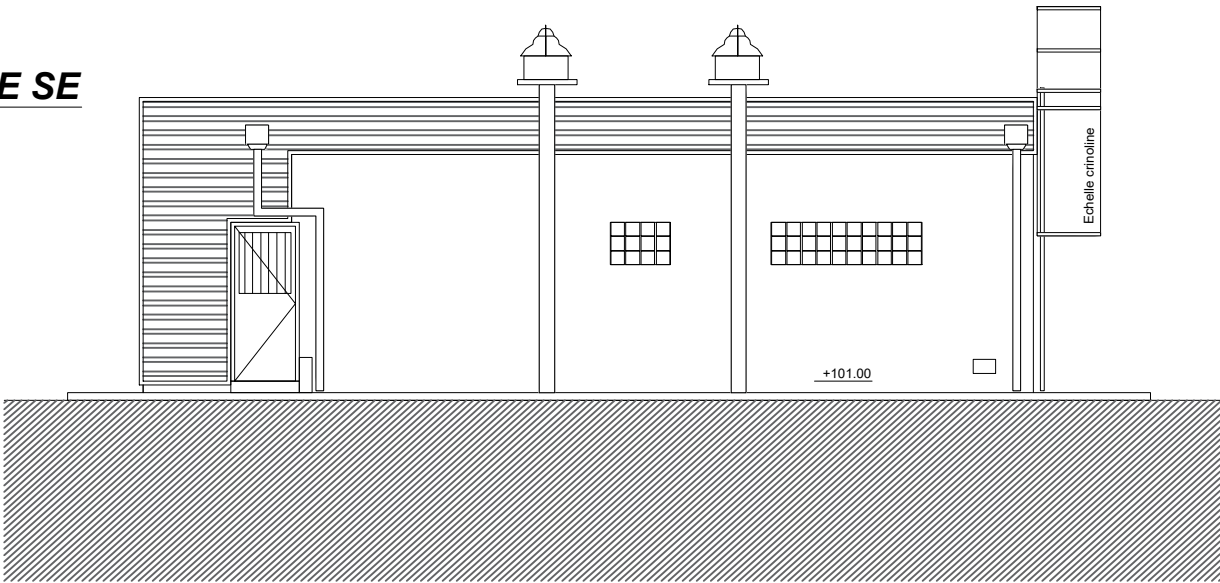
FACADE NE

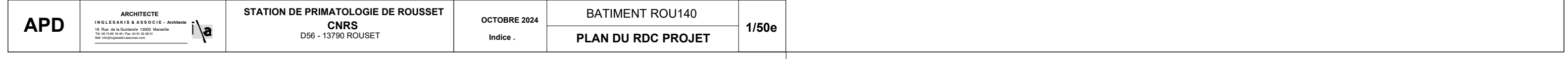


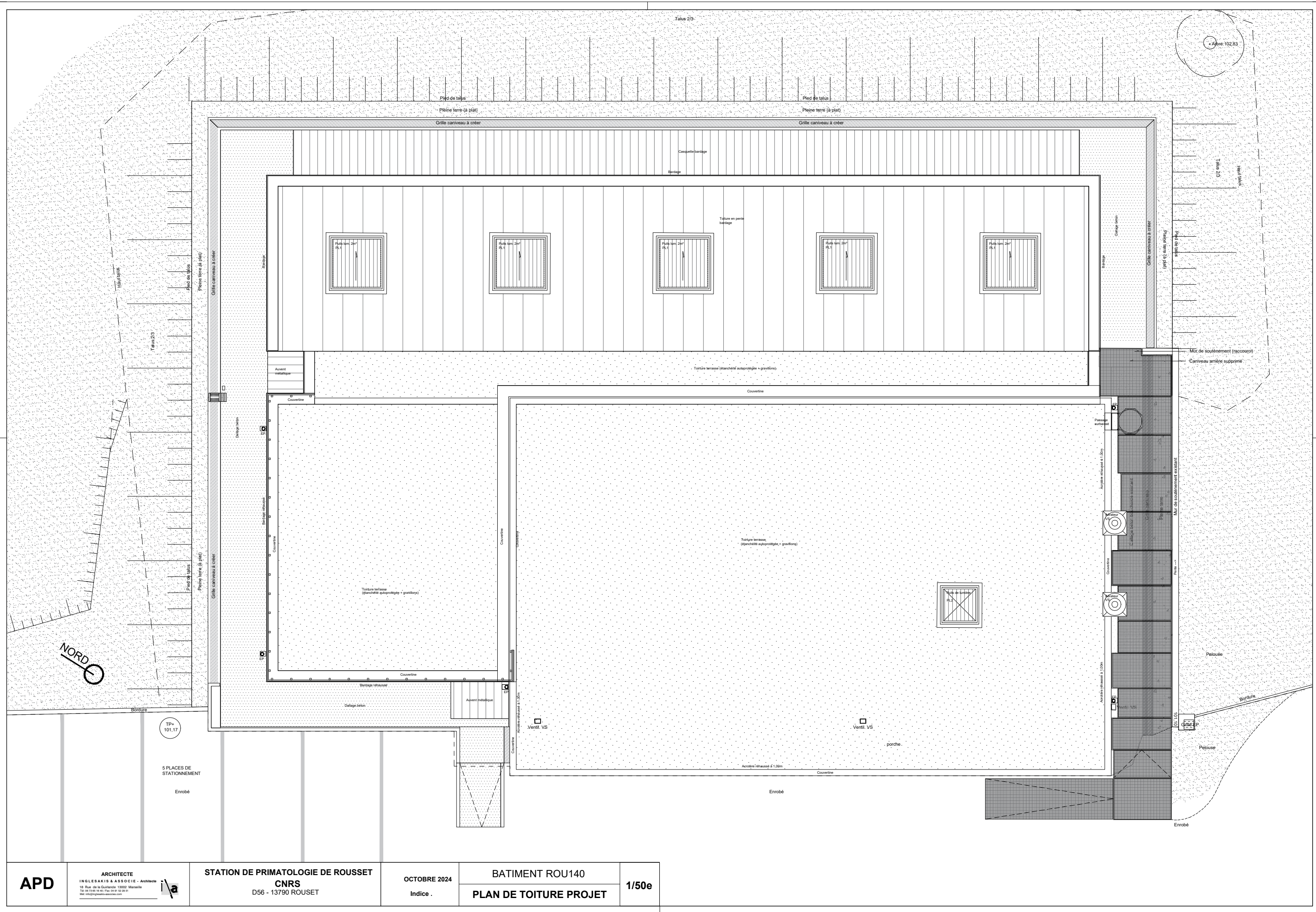
FACADE NO

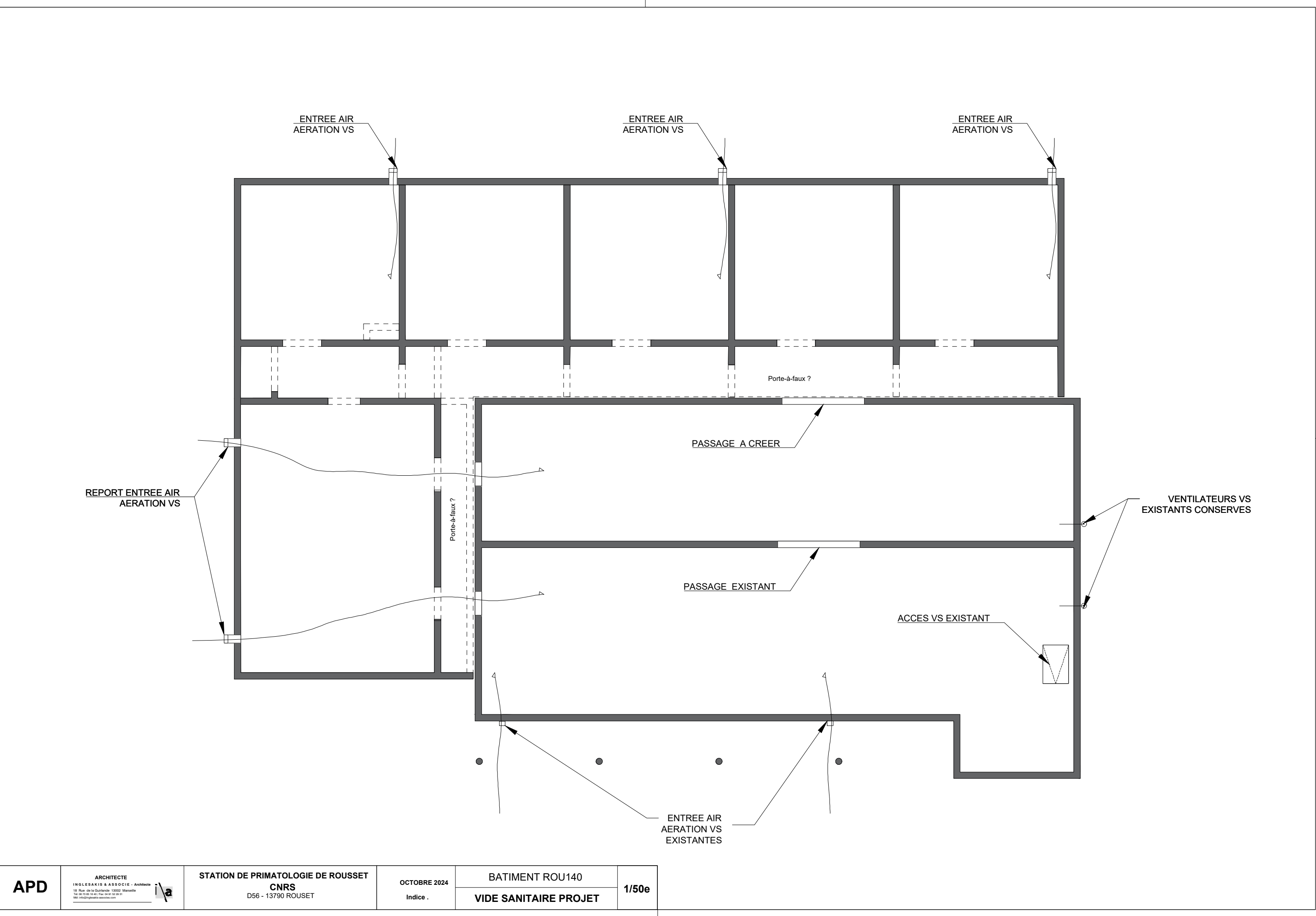


FACADE SE

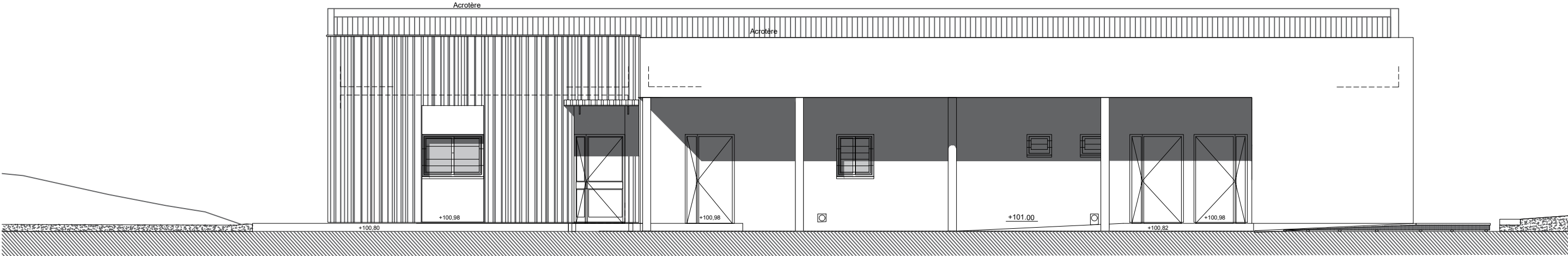




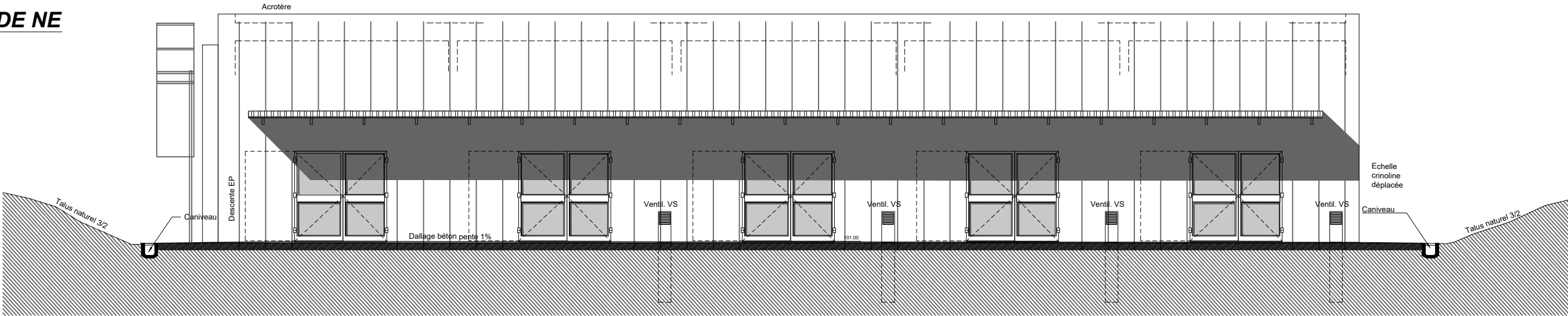




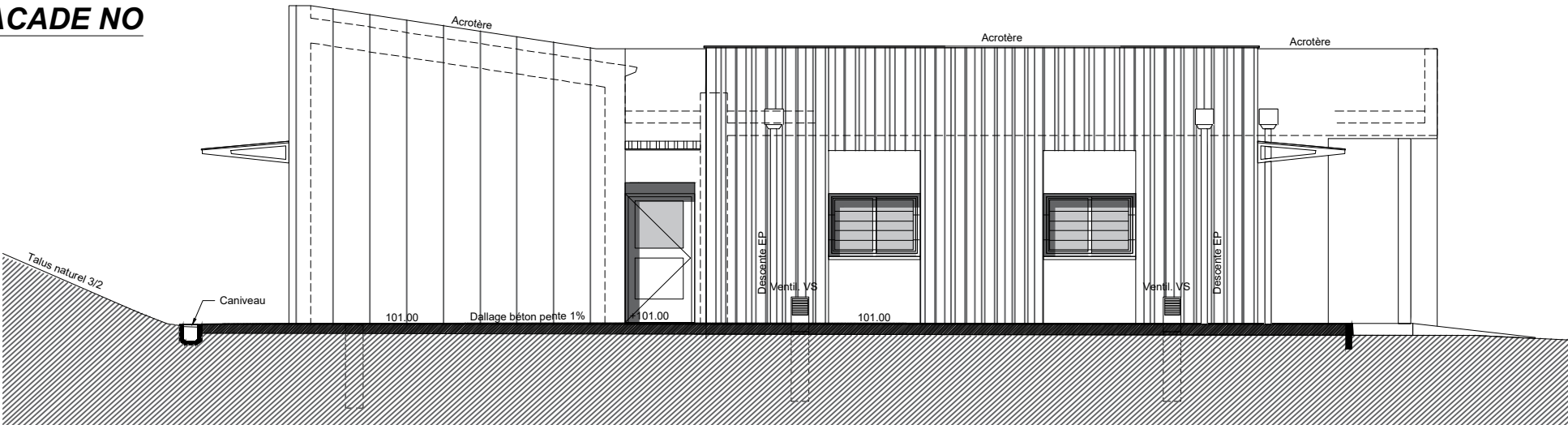
FACADE SO



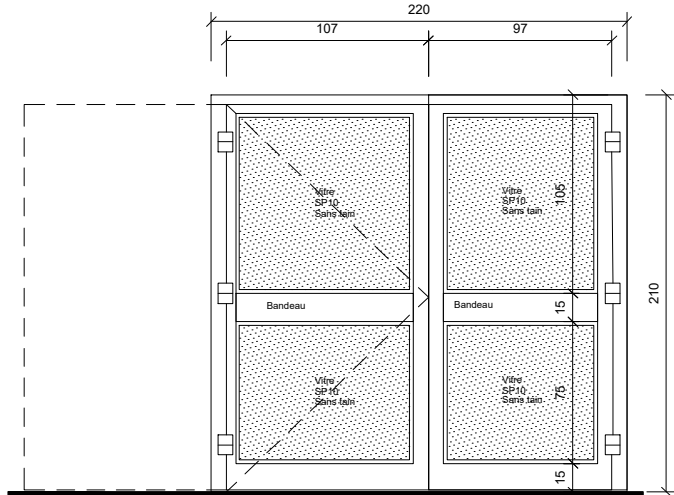
FACADE NE



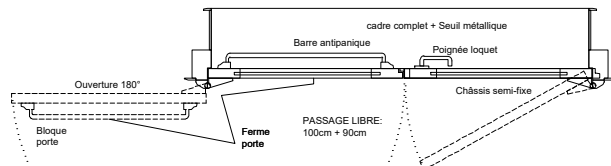
FACADE NO



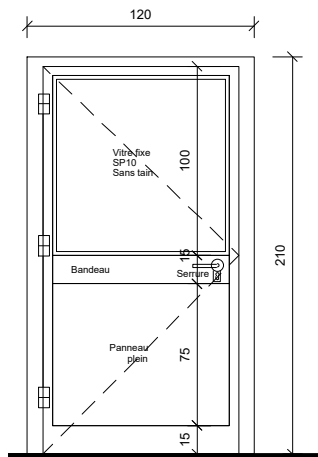
(A) ENTREE EXTERIEURE
SUR VOLIERE



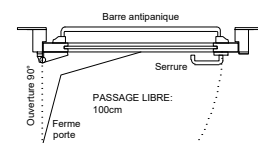
NI SERRURE
NI POIGNEE EXTERIEURE



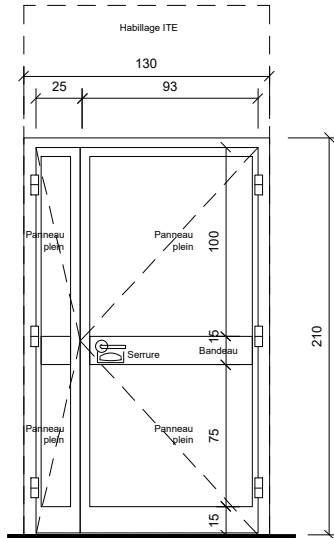
(B) ENTREE EXTERIEURE
SUR COULOIR DISTRIBUTION
NEUF



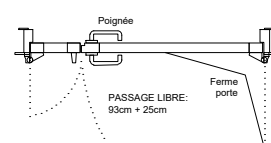
CONTROLE
D'ACCES



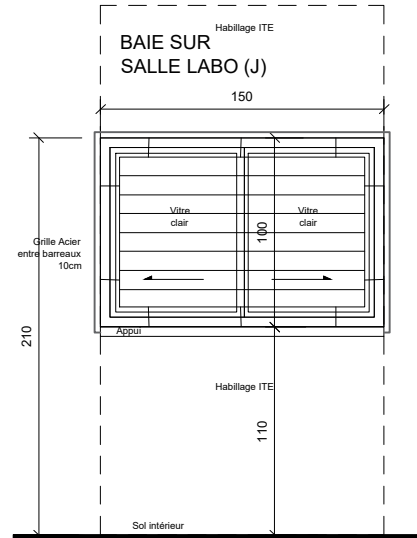
(C) ENTREE EXTERIEURE
SUR COULOIR LABO



CONTROLE
D'ACCES

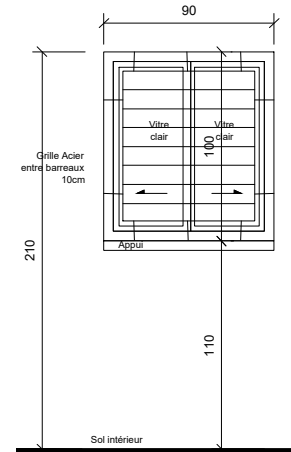


BAIE SUR
SALLE LABO (J)



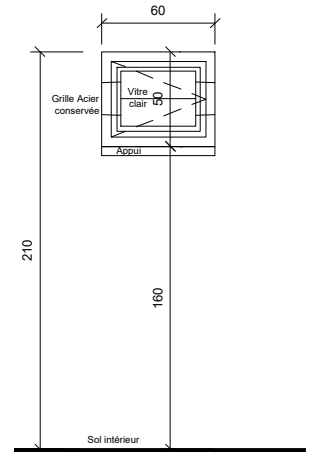
CHASSIS
SUR ITE

BAIE SUR SALLE
AUTOCLAVE (K)

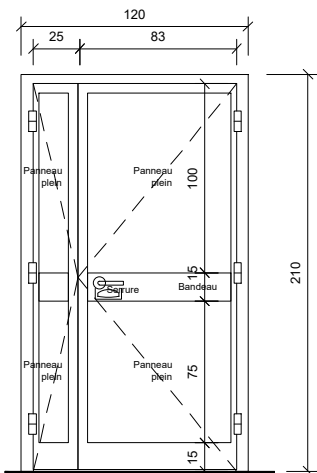


CHASSIS
SUR ITI

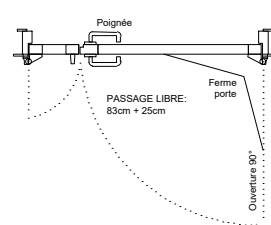
BAIE SUR LOCAL
CONGELATEUR (L)



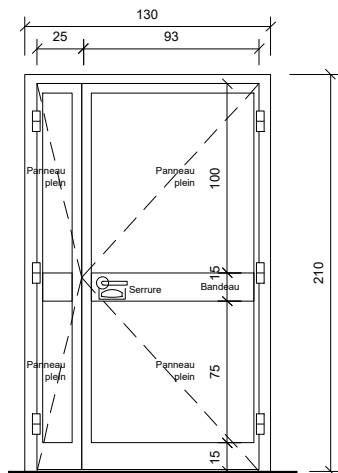
(D) ENTREE EXTERIEURE
SUR LOCAL TECHNIQUE AZOTE



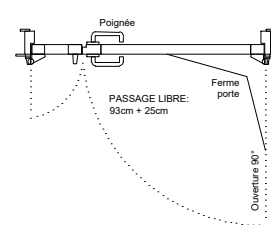
CONTROLE
D'ACCES



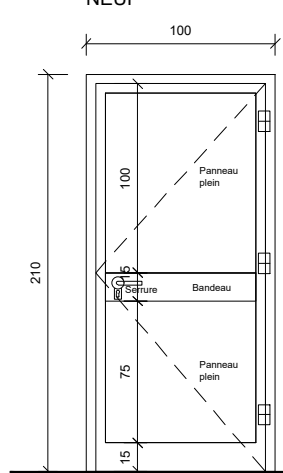
(E) ENTREE EXTERIEURE
SUR LOCAL CONGELATEURS
ET COULOIR DISTRIBUTION EXISTANT



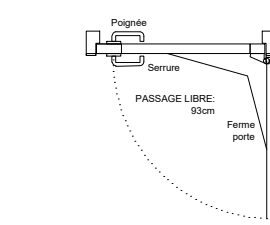
CONTROLE
D'ACCES



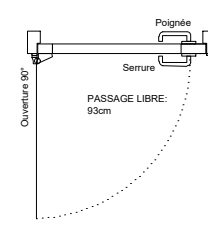
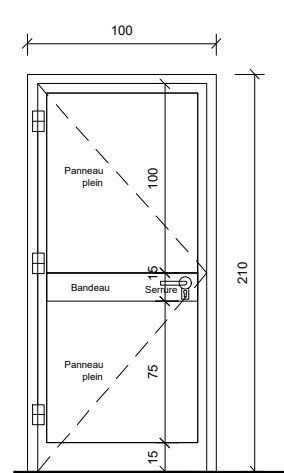
(F) ENTREE EXTERIEURE
SUR COULOIR DISTRIBUTION
NEUF



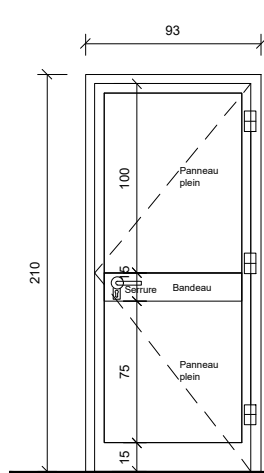
CONTROLE
D'ACCES



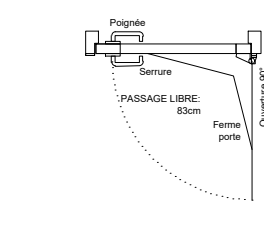
(G) ENTREE EXTERIEURE
SUR TGBT / ACCES VS



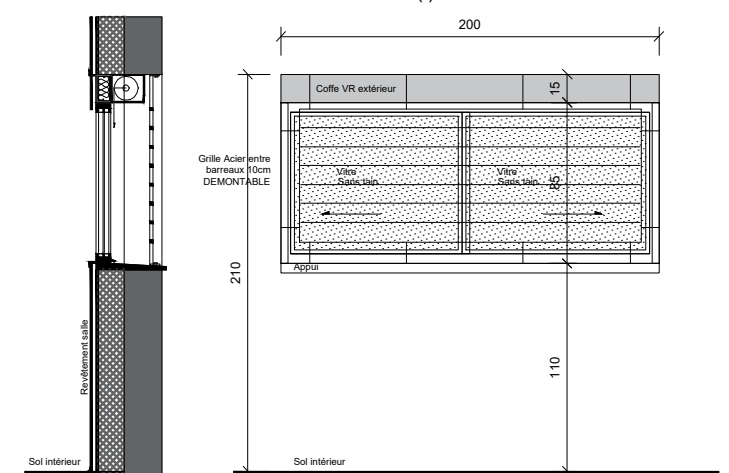
(H) ENTREE EXTERIEURE
SUR STOCKAGE AUTOPSIE



CONTROLE
D'ACCES

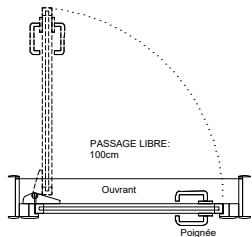
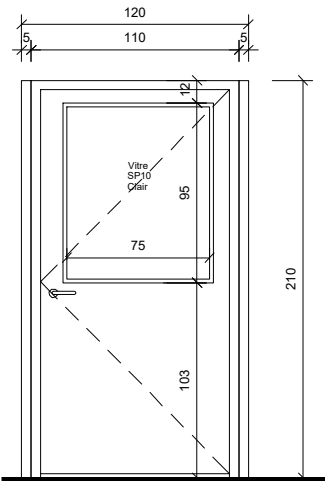


BAIE SUR BLOC CHIRURGIE (I)

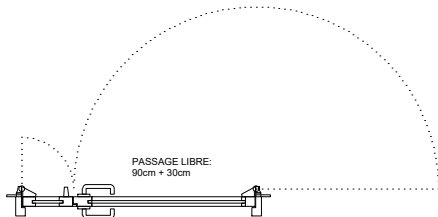
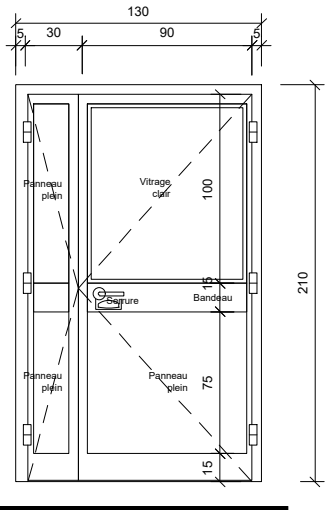


(P1)
REFERENCE
SUPPRIMEE

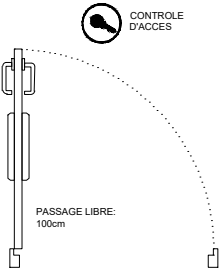
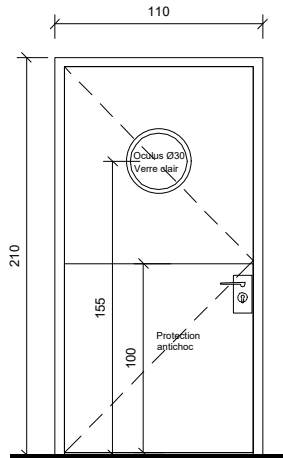
(P2) ENTREE INTERIEURE
SUR VOLIERES



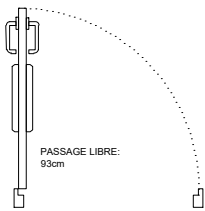
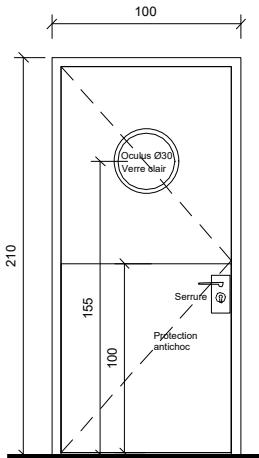
(P3) ENTREE SUR
LABO REPRO



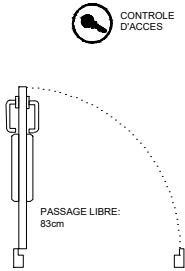
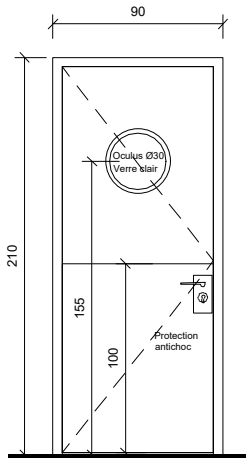
(P4) PORTES BOIS
INTERIEURES
SUR ZONE SOINS LONGS



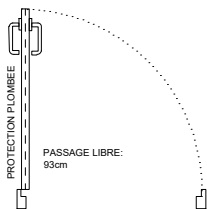
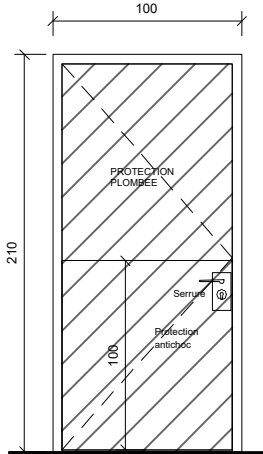
(P5) PORTES BOIS
INTERIEURES
SUR SAS ET CHIRURGIE



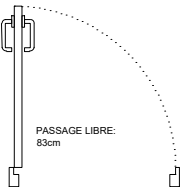
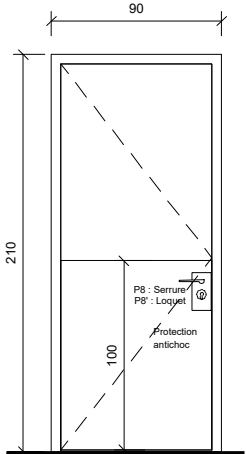
(P6) PORTES BOIS
INTERIEURES
SUR COULOIR INTERNE



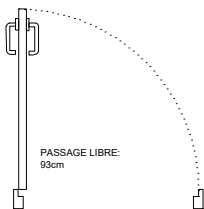
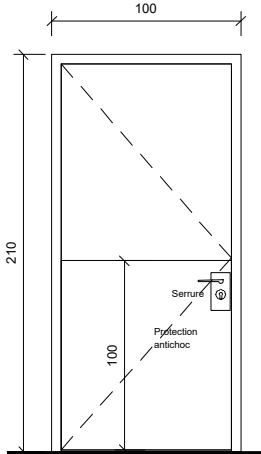
(P7) PORTE BOIS
INTERIEURE
SUR RADIOLOGIE



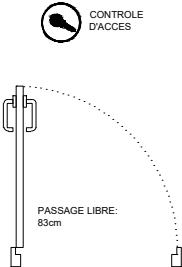
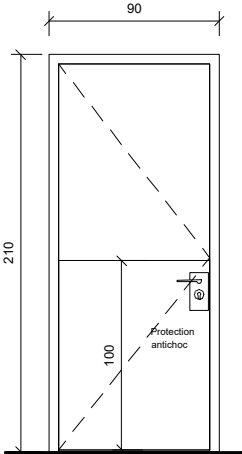
(P8 / P8') PORTE BOIS
INTERIEURE
GENERIQUE



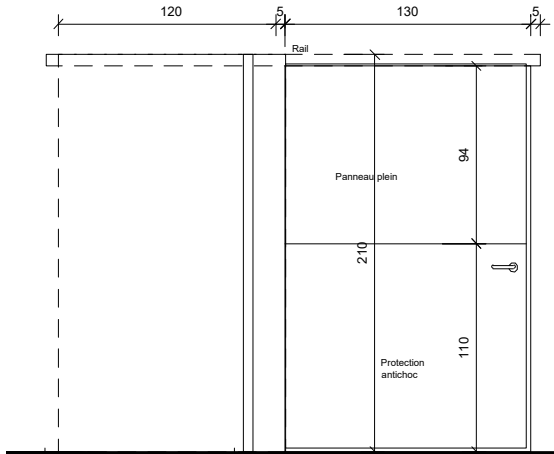
(P9) PORTE BOIS
INTERIEURE
SUR STOCKAGE / AUTOPSIE



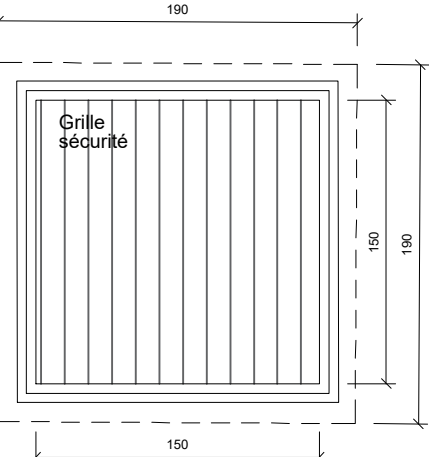
(P10) PORTE BOIS
INTERIEURE
SUR STOCK MEDICAL



(P11) PORTE BOIS
INTERIEURE COULISSANTE
SUR LOCAL TECHNIQUE AZOTE

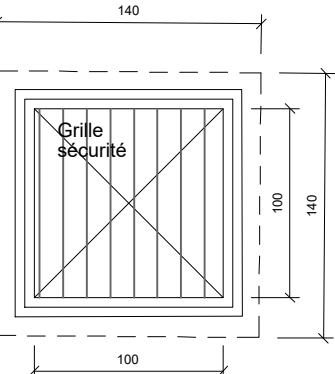


(PL 1) Puits de lumière sur volières

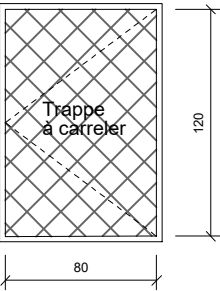


Puits de lumière Polycarbonate
2m²

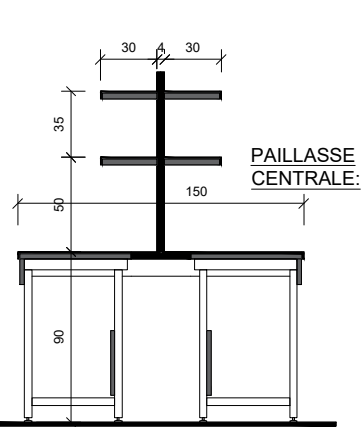
(PL 2) Puits de lumière sur couloir existant



Puits de lumière Polycarbonate
FIXE - 1m²

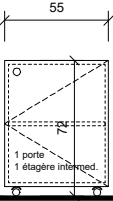


Trappe accès
VS 80x120
(REPLACEMENT)



COUPES SUR PAILLASSES

MEUBLE
SOUS
PAILLASSE:



PAILLASSE MURALE + ETAGERES:

Prise aération VS
grille à ventelles
0,25x0,25m
+ conduit vertical galva

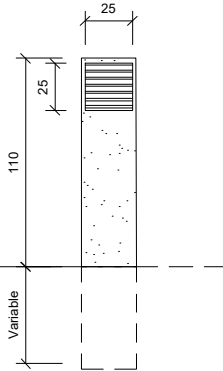


TABLEAU DETAILLE MENUISERIES EXTERIEURES (PORTES)

Code	passage	Vitrage	Type	Matériau	Contrôle d'accès	Ferme-porte
A	100cm	OUI	SP10 sans tain	Aluminium	Aucun	OUI + barre A.
B	100cm	OUI	SP10 sans tain (haut)	Aluminium	Intégral	OUI + barre A.
C	93+25cm	NON	Panneaux pleins	Aluminium	Intégral	OUI
D	83+25cm	NON	Panneaux pleins	Aluminium	Intégral	OUI
E	93+25cm	NON	Panneaux pleins	Aluminium	Intégral	OUI
F	93cm	NON	Panneaux pleins	Aluminium	Intégral	OUI
G	93cm	NON	Panneaux pleins	Aluminium	Serrure simple	NON
H	83cm	NON	Panneaux pleins	Aluminium	Intégral	OUI

TABLEAU DETAILLE MENUISERIES EXTERIEURES (FENETRES / PDL)

Code	Largeur	Hauteur	Type	Matériau	Fermeture	Occultation
I	200cm	85cm	SP10 sans tain	Aluminium	Barreaux métal	VR extérieur
J	150cm	100cm	SP10 sans tain	Aluminium	Barreaux métal	NON
K	90cm	100cm	Panneaux pleins	Aluminium	Barreaux métal	NON
L	60cm	50cm	Panneaux pleins	Aluminium	Barreaux métal	NON
PL1	150cm	150cm	Puits de lumière translucide	Polycarbonate translucide	Grille métal	NON
PL2	100cm	100cm	Puits de lumière translucide	Polycarbonate translucide	Grille métal	NON

TABLEAU DETAILLE MENUISERIES INTERIEURES

Code	Passage	Vitrage	Type	Matériau	Contrôle d'accès	Ferme-porte
P1	(Référence supprimée)					
P2	100cm	OUI	SP10 clair partie haute	Aluminium	Serrure simple	OUI
P3	90+30cm	OUI	1/2 hauteur : Vitrage clair	Aluminium	Serrure simple	OUI
P4	100cm	OUI	Oculus Ø30	Bois + protection	Intégral	OUI
P5	93cm	OUI	Oculus Ø30	Bois + protection	Serrure simple	OUI
P6	83cm	OUI	Oculus Ø30	Bois + protection	Intégral	OUI
P7	93cm	NON		Bois + protection + radiations	Serrure simple	OUI
P8	83cm	NON		Bois + protection	Serrure simple	NON
P8'	83cm	NON		Bois + protection	Loquet	NON
P9	93cm	NON		Bois + protection	Serrure simple	NON
P10	83cm	NON		Bois + protection	Intégral	OUI
P11	120cm	OUI	Panneau plein	Bois + protection	Aucun	NON

APD	<div>ARCHITECTE</div> <div>INGLESAKIS & ASSOCIE - Architecte</div> <div>18 Rue de la Guirlande 13002 Marseille</div> <div>Tel: 06 73 85 18 40 / Fax: 06 91 50 20 91</div> <div>Email: info@inglesakis-associes.com</div> <div></div>	STATION DE PRIMATOLOGIE DE ROUSSET CNRS D56 - 13790 ROUSET	OCTOBRE 2024 Indice .	BATIMENT ROU140	
				VUES PERS 1 PROJET	

APD	<div>ARCHITECTE</div> <div>INGLESAKIS & ASSOCIE - Architecte</div> <div>18 Rue de la Guirlande 13002 Marseille</div> <div>Tel: 06 73 85 18 40 / Fax: 06 91 50 20 91</div> <div>Email: info@inglesakis-associes.com</div> <div></div>	STATION DE PRIMATOLOGIE DE ROUSSET CNRS D56 - 13790 ROUSET	OCTOBRE 2024 Indice .	BATIMENT ROU140	
				VUES PERS 2 PROJET	